



Product Overview

Mission Critical, Specialty
Comfort & Outdoor-Air





Established 2003

01

Who We Are.

**AboveAir Technologies
has provided innovative
HVAC product solutions for
commercial and industrial
applications since 2003.**

As the leader in indoor comfort, precision, and high percentage outside air equipment design, AboveAir has deployed thousands of tons of equipment across North America. We market our applied HVAC equipment through our exclusive network of independent Manufacturer's Representatives.

After four major expansions, AboveAir now maintains a 90,000 sqft state-of-the-art manufacturing facility in Frederick, Maryland. AboveAir products have been tested and listed by Intertek (ETL), Inc to be in conformance with UL 1995 Test Standard for Heating and Cooling Equipment for use in the U.S.A. and Canada.

AboveAir's commercial systems have been selected by such clients as Bank of America, Verizon, Capital One, Carnegie Hall, Citibank, Cornell University, Credit Suisse, Facebook, DOD, DOJ, DOS, IBM, JP Morgan Chase, Microsoft, MMSK, M&T Bank, Morgan Stanley, Mt Sinai, NYPH, NYU, Soul Cycle, SUNY, USPS, and Wells Fargo.



Our engineered HVAC equipment is regularly selected and specified by design professionals across North America, with common applications including **computer rooms, general offices spaces, conference rooms, fitness facilities, restaurants, schools & universities, and industrial facilities.**

02

Products

Mission Critical Equipment

AboveAir's precision cooling equipment provides the flexibility that mission critical applications demand.





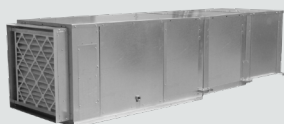
MC™ – Vertical Floor Mounted Precision A/C's (From 1 to 50-Tons)

AboveAir MC™ vertical floor mounted A/C's provide reliable 7x24 indoor perimeter precision cooling solution for today's mission critical cooling needs, such as, data centers, network closets, and equipment control rooms. Featuring the industry's most compact 24"x24" footprint system from 1 to 3-Tons (MC2x2™), MC™ systems are also available in dx up to 30-Tons and chilled water systems up to 50-Tons. Available in a wide variety of cooling methods and cabinet configurations including a full range of options!



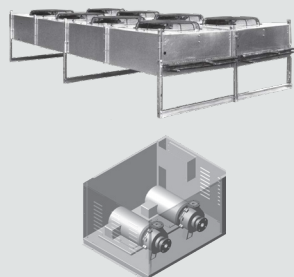
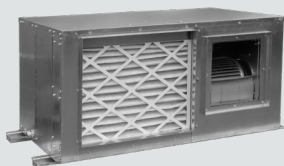
FC™ – Floor Console Precision A/C's (From 1 to 5-Tons)

AboveAir FC™ floor console / wall mounted A/C's provide a compact footprint precision cooling control solution for small computer rooms, network closets, IDF/ MDF rooms, and equipment control rooms. Available in a wide variety of cooling methods and cabinet configurations including a full range of options!



SC™ & HK™ – Ceiling Mounted Precision A/C's (From 1 to 20-Tons)

AboveAir SC™ & HK™ ceiling mounted A/C's provide a floor saving above-the-ceiling precision cooling control solution for computer rooms, network closets, IDF/ MDF rooms, and equipment control rooms. Available in a wide variety of cooling methods and cabinet configurations & air patterns including a full range of options!



Glycol Drycoolers / Pump Packages

AboveAir remote glycol drycoolers and pump packages are designed to provide the glycol source heat rejection required by single or multiple loop DX glycol cooled air conditioners and glycol source heat pumps. Indoor drycoolers, variable speed (VFD) pump packages, and custom integrated pump packages are also available.

03

Products

Specialty Comfort Equipment

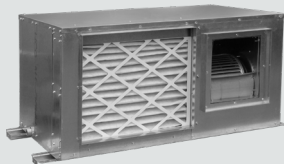
AboveAir's specialty comfort cooling equipment has a diversity of cabinet configurations, heat rejection methods, and options designed to help owners, engineers, and contractors find the perfect fit.





SC™ & HK™ – Ceiling Mounted A/C's & H/P's (From 1 to 20-Tons)

AboveAir SC™ & HK™ ceiling mounted A/C's provide a floor saving above-the-ceiling supplemental & primary cooling solution for offices, retail stores, restaurants, lobbies, auditoriums, schools, and conference & training rooms. Available in a wide variety of cooling methods and cabinet configurations & air patterns including a full range of options!



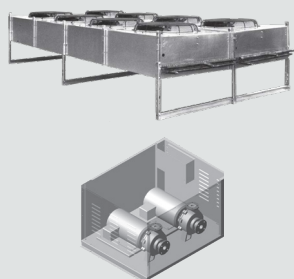
VK™ – Vertical Floor Mtd A/C's & HP's (From 1 to 30-Tons)

AboveAir VK™ vertical floor mounted A/C's & H/P's provide a compact indoor floor-to-floor comfort control solution where an indoor floor mounted system is preferred over a roof penetrating roof-top cooling / heating unit. Our VK vertical floor mounted air conditioner series is commonly used in both primary and supplemental cooling applications, such as, offices, retail stores, restaurants, lobbies, auditoriums, schools, and conference & training rooms.



M3-HP™ – Water/Glycol Source Heat Pumps (From 1/2 to 30-Tons)

AboveAir's M3 Heat Pump™ horizontal ceiling and vertical floor mounted water source heat pumps are the space saving environmental control solution to your comfort cooling and heating needs. Available in a wide variety of cooling methods and cabinet configurations & air patterns including a full range of options!



Glycol Drycoolers / Pump Packages

AboveAir remote glycol drycoolers and pump packages are designed to provide the glycol source heat rejection required by single or multiple loop DX glycol cooled air conditioners and glycol source heat pumps. Indoor drycoolers, variable speed (VFD) pump packages, and custom integrated pump packages are also available.

Products

04

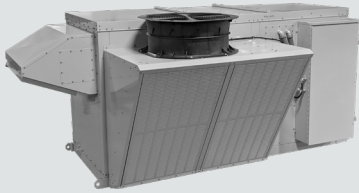
Outdoor Air Equipment

AboveAir's outdoor air equipment provides a dedicated rooftop (RT-OA DOAS), indoor vertical floor (VK-OA) or indoor horizontal ceiling (HK-OA), mounted environmental control solution for indoor space designs requiring compliance with ASHRAE Standard 62.1 – 2016 ventilation for acceptable indoor air quality requirements.



RT-OA™ DOAS – Rooftop Outdoor-Air

(From 3 to 72-Tons)



AboveAir RT-OA™ Outdoor Air Rooftop Dedicated & High-Percentage Mixed-Air Outdoor Air Systems (DOAS) are designed to provide year round treatment of your ventilation requirements. Systems are available from 440 – 18,000 CFM (3-72 Tons) in a variety of de-humidification & heating methods. RT-OA™ systems incorporate energy saving precision control variable speed digital scroll technology along with total energy recovery wheels; modulating hot gas reheat; gas fired, SCR electric, hot water or steam heat options. Space Neutral, Primary Space, VAV, and Single-Zone VAV control options are available!

VK-OA™ – Vertical Floor Mtd Outdoor-Air

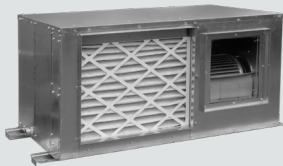
(From 3 to 30-Tons)



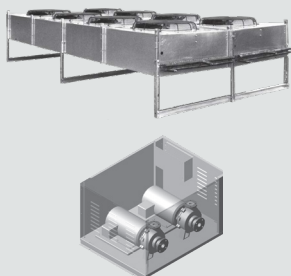
AboveAir's VK-OA™ vertical floor mounted high-percentage outdoor-air A/C's & H/P's provide a compact indoor floor-to-floor ventilation solution where an indoor floor mounted system is preferred over a roof penetrating roof-top unit. Systems are available from 440 – 12,000 CFM (3-30 Tons) in a variety of de-humidification & heating methods. VK-OA™ systems incorporate energy saving precision control variable speed digital scroll technology along with; modulating hot gas reheat; gas fired, SCR electric, hot water or steam heat options. Space Neutral, Primary Space, VAV, and Single-Zone VAV control options are available!

HK-OA™ – Horizontal Ceiling Mtd Outdoor-Air

(From 3 to 30-Tons)



AboveAir's HK-OA™ ceiling mounted high-percentage outdoor-air A/C's & H/P's provide a floor saving above-the-ceiling ventilation solution where an indoor ceiling mounted system is preferred over a roof penetrating roof-top unit. Systems are available from 440 – 8,000 CFM (3-30 Tons) in a variety of de-humidification & heating methods. HK-OA™ systems incorporate energy saving precision control variable speed digital scroll technology along with; modulating hot gas reheat; gas fired, SCR electric, hot water or steam heat options. Space Neutral, Primary Space, VAV, and Single-Zone VAV control options are available!



Glycol Drycoolers / Pump Packages

AboveAir remote glycol drycoolers and pump packages are designed to provide the glycol source heat rejection required by single or multiple loop DX glycol cooled air conditioners and glycol source heat pumps. Indoor drycoolers, variable speed (VFD) pump packages, and custom integrated pump packages are also available.



AboveAir

TECHNOLOGIES

📍 5179 Mountville Road, Frederick, MD 21703

☎ (301) 874-1130 📠 (301) 874-1131 ➡ www.aboveair.com